



PASSCODE

# PRIDE OF MALAD

MALADEAST



RIGHT CHANNEL  
CONSTRUCTIONS PVT. LTD.

Redefining Lifestyles



PASSCODE  
**PRIDE OF  
MALAD**  
MALAD EAST

**WE PROVIDE A MAGNIFICENT  
LIFESTYLE.**

Welcome to Pride of Malad, a life of comfort and luxury you've wished for and superlative designs you've always desired for. Now experience the lavish life at Pride of Malad, a luxury landmark in the making as Malad's tallest tower, with superiority over the rest and advantageously located in Malad, the heart of Mumbai. 'Pride of Malad' is a first-rate modern architecture project by RCC and is embellished with every necessary convenience of city life. Tastefully stylish and luxurious, experience good living in spacious 2 & 3 BHK apartments with distinctive specifications, convenient roadways, proximity of institutions and entertainment hubs and an exhaustive list of amenities. Pride of Malad is infused with extreme luxury & sophisticated infrastructure as per today's demand of the aspirational generation. It is an imposing multi-storied tower with luxurious apartments that will blend style with functional convenience. Celebrating 34 years in the real estate industry, Right Channel Constructions Pvt. Ltd. is pleased to present its 28th project, Pride of Malad.



# ABOUT US

As RCC, we are a reliable & competent Real Estate company in Mumbai that engages in the Development & Construction Business. RCC has been among the leading Real Estate developers in Mumbai as we possess a team with exceptional expertise & cooperative spirit in every aspect of the field. We strive to work with every bit to reach client contentment.

Our consistency in delivering projects on time and making houses that are a class apart makes us one of the top real estate companies in Mumbai. Our expertise lies in standing true to the commitments made to our customers and property investors.

Until now, we have accomplished various commercial & residential projects & are anticipating our upcoming projects. We deliver extravagant & sumptuous Real Estate Properties in Mumbai with excellent in-class amenities. Besides Residential projects, RCC also undertakes Commercial Projects and has evolved in rendering unique & practical Commercial Properties in Mumbai.

The designing of Commercial Properties in Mumbai by RCC considers the interests & importance of a healthy work environment. It incorporates various work zones to maintain systematic work completion in an organized manner. Among our various projects, we have flats for sale in Malad East, Vikhroli West, and various parts of Mumbai that are a mark of grandeur and luxury. The timely delivery of our projects is what makes us one of the best in the business.

2000+  
Happy Families

27+  
Completed Projects

6+  
Ongoing Projects

34+  
Years of Legacy

50 LACS+  
Sq.ft. Developed,  
Ongoing & Future

## LEGACY

RCC has been continuing its legacy in the Real Estate for more than 34 years now. It follows the path of righteousness with complete integrity.



RIGHT CHANNEL  
CONSTRUCTIONS PVT. LTD.  
Redefining Lifestyles

  
**TOWER  
28**  
— MALAD (E) —

**DISCOVER  
LIFE WITH A DIFFERENCE.**

TRIPLE HEIGHT LOBBY



# 11 STOREY CAR PARKING RAMP







## MASTER LAYOUT PLAN

### PODIUM AMENITIES

- 1 Amphitheatre
- 2 Multi-purpose Court
- 3 Senior Citizen Area
- 4 Podium Garden
- 5 Mini-golf Court
- 6 Kids' Play Area
- 7 Fitness Centre Inside Building Podium Level
- 8 Botanical Garden

### ROOFTOP AMENITIES

- 1 Sky Garden
- 2 Sky Cabana
- 3 Jogging Track
- 4 Kids' Play Area
- 5 Senior Citizen Area
- 6 Barbeque Terrace
- 7 Sky Gazebo
- 8 Sky Walk
- 9 Stage for Social Gathering
- 10 Sky Lounge







# CHILDREN'S PLAY AREA





# TERRACE LANDSCAPE



MASTER LAYOUT - BIRD EYE VIEW



BIRD EYE VIEW



## EXTERNAL SPECIFICATIONS

---

- Double height entrance lobby
- Air conditioned concierge desk & lounge
- Advanced security with 24x7 CCTV service
- Multi Level vehicle parking space
- Wi-Fi enabled common areas
- High speed elevators
- Sewage treatment plant
- Rain water harvesting
- Bore water facility
- Texture adorned wall
- Asian Paints
- Solar System

## INTERNAL SPECIFICATIONS

---

- Premium Flooring
- Designer ware tiles
- Branded sanitary ware
- Anodised aluminum windows
- Intercom facility
- Jaquar CP fittings
- Asian Royale paints adorned walls

## SAFETY & FIRE PROTECTION

---

- Fully equipped with fire fighting system internally to externally of the flat to building

## ENVIRONMENT AND HEALTH

- 160 Herbal and trees plantation around the periphery of internal layout
- Herbal and trees on rooftop



FLAT NO.	TYPE	RERA CARPET AREA IN SQ.FT
01.	2 BHK	624
02.	2 BHK	648
03.	2 BHK	625



TYPICAL FLOOR PLAN (WING C) - 1<sup>ST</sup> TO 11<sup>TH</sup> HABITABLE FLR.  
REFUGE FLOOR - 6<sup>TH</sup> FLR.



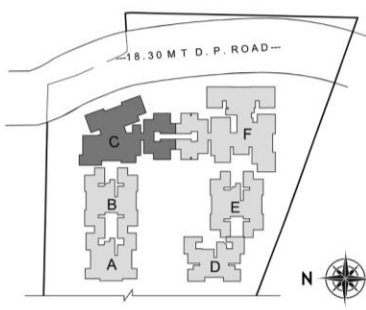




FLAT NO.	TYPE	RERA CARPET AREA IN SQ.FT
01.	2 BHK	634
02.	2 BHK	634
03.	3 BHK	853
04.	2 BHK	683

TYPICAL FLOOR PLAN (WING F) - 1<sup>ST</sup> TO 11<sup>TH</sup> HABITABLE FLR.  
REFUGE FLOOR - 6<sup>TH</sup> FLR.



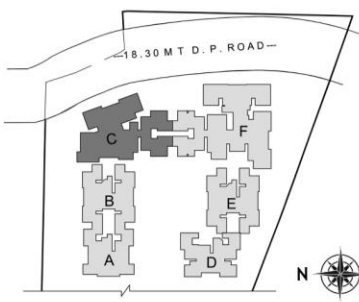


FLAT NO.	TYPE	RERA CARPET AREA IN SQ.FT
01.	2 BHK	624
02.	2 BHK	648
03.	2 BHK	648
04.	2 BHK	603
05.	2 BHK	603



TYPICAL FLOOR PLAN (WING C) - 13<sup>TH</sup> TO 25<sup>TH</sup> HABITABLE FLR.  
 REFUGE FLOOR - 13<sup>TH</sup> and 20<sup>TH</sup> FLR.



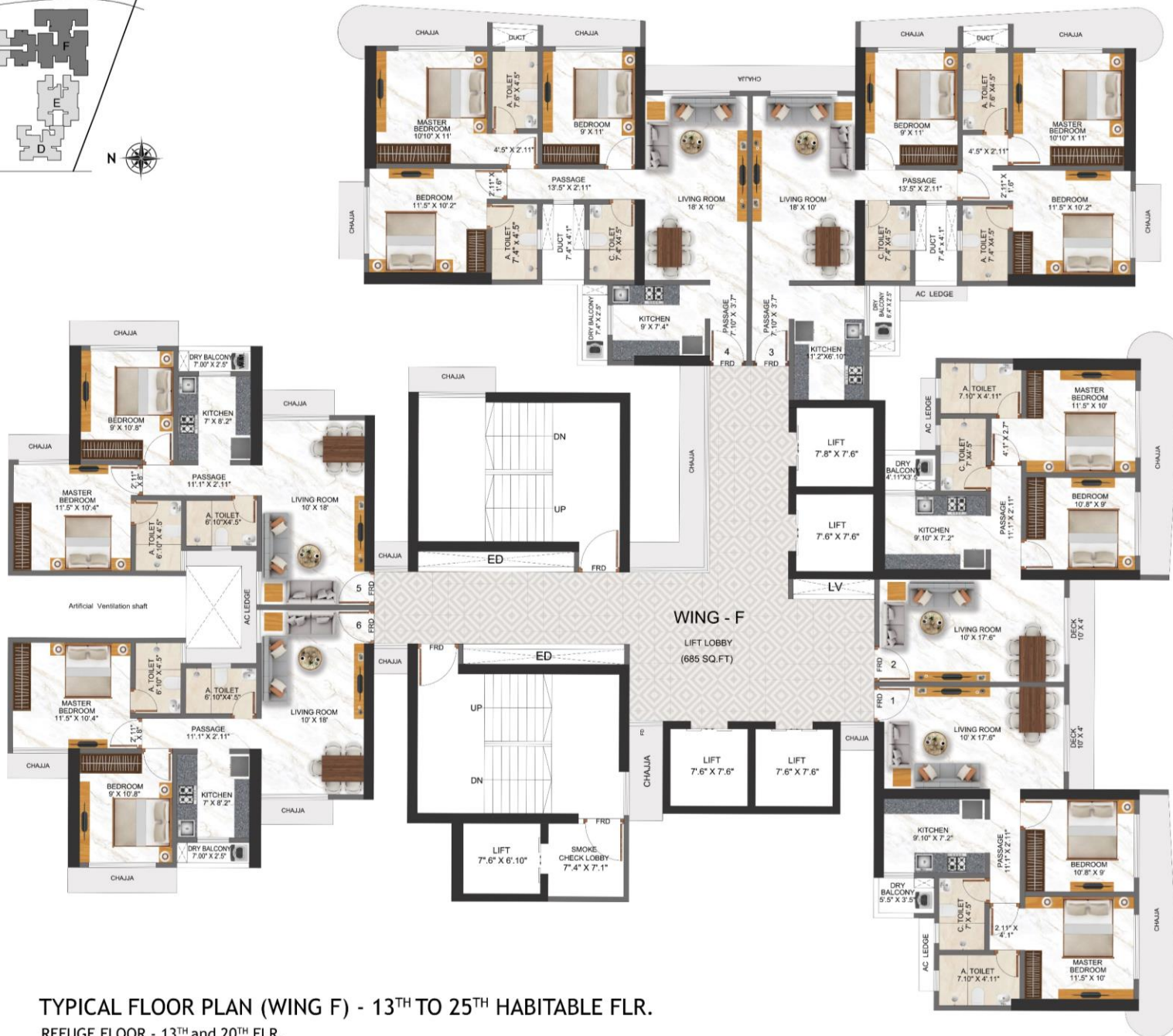
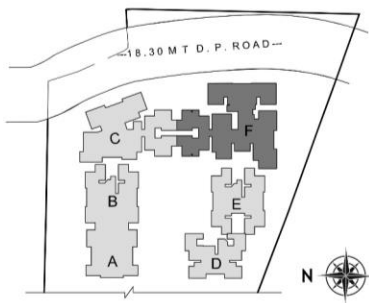


FLAT NO.	TYPE	RERA CARPET AREA IN SQ.FT
01.	2 BHK	624
02.	2 BHK	691
03.	2 BHK	691
04.	2 BHK	603
05.	2 BHK	603



TYPICAL FLOOR PLAN (WING C) - 26<sup>TH</sup> TO 42<sup>TH</sup> HABITABLE FLR.  
 REFUGE FLOOR - 27<sup>TH</sup> TO 36<sup>TH</sup> FLR.  
 AMENITY FLOOR - 41<sup>ST</sup> TO 42<sup>ND</sup> FLR.





FLAT NO.	TYPE	RERA CARPET AREA IN SQ.FT
01.	2 BHK	634
02.	2 BHK	634
03.	3 BHK	853
04.	3 BHK	846
05.	2 BHK	603
06.	2 BHK	603

TYPICAL FLOOR PLAN (WING F) - 13<sup>TH</sup> TO 25<sup>TH</sup> HABITABLE FLR.  
 REFUGE FLOOR - 13<sup>TH</sup> and 20<sup>TH</sup> FLR.

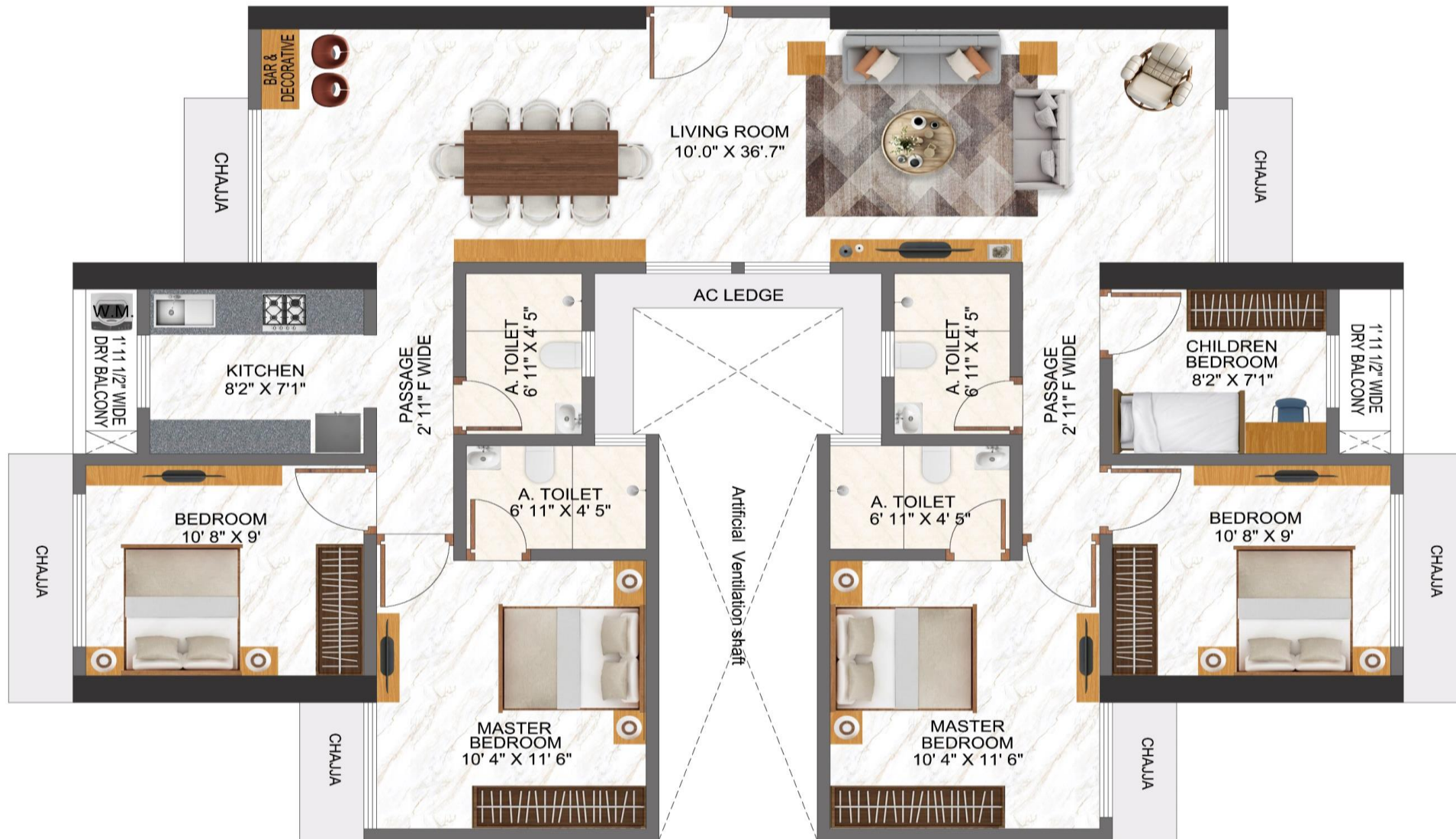




FLAT NO.	TYPE	RERA CARPET AREA IN SQ.FT
01.	2 BHK	677
02.	2 BHK	677
03.	3 BHK	897
04.	3 BHK	889
05.	2 BHK	603
06.	2 BHK	603

TYPICAL FLOOR PLAN (WING F) - 26<sup>TH</sup> TO 42<sup>TH</sup> HABITABLE FLR.  
 REFUGE FLOOR - 27<sup>TH</sup> TO 34<sup>TH</sup> FLR.  
 AMENITY FLOOR - 41<sup>ST</sup> TO 42<sup>ND</sup> FLR.





**603 + 603 = 1206 Rera Carpet**

**4.5 BHK ( 2 BHK JODI )  
UNIT 4 & 5 ( WING C ) / UNIT 5 & 6 ( WING F )**



**WITHOUT DECK**  
634 + 634 = 1268 Rera Carpet

**4.5 BHK + STUDY RM. ( 2 BHK JODI )**  
**UNIT 1 & 2 ( WING F )**

**WITH DECK**  
677 + 677 = 1354 Rera Carpet

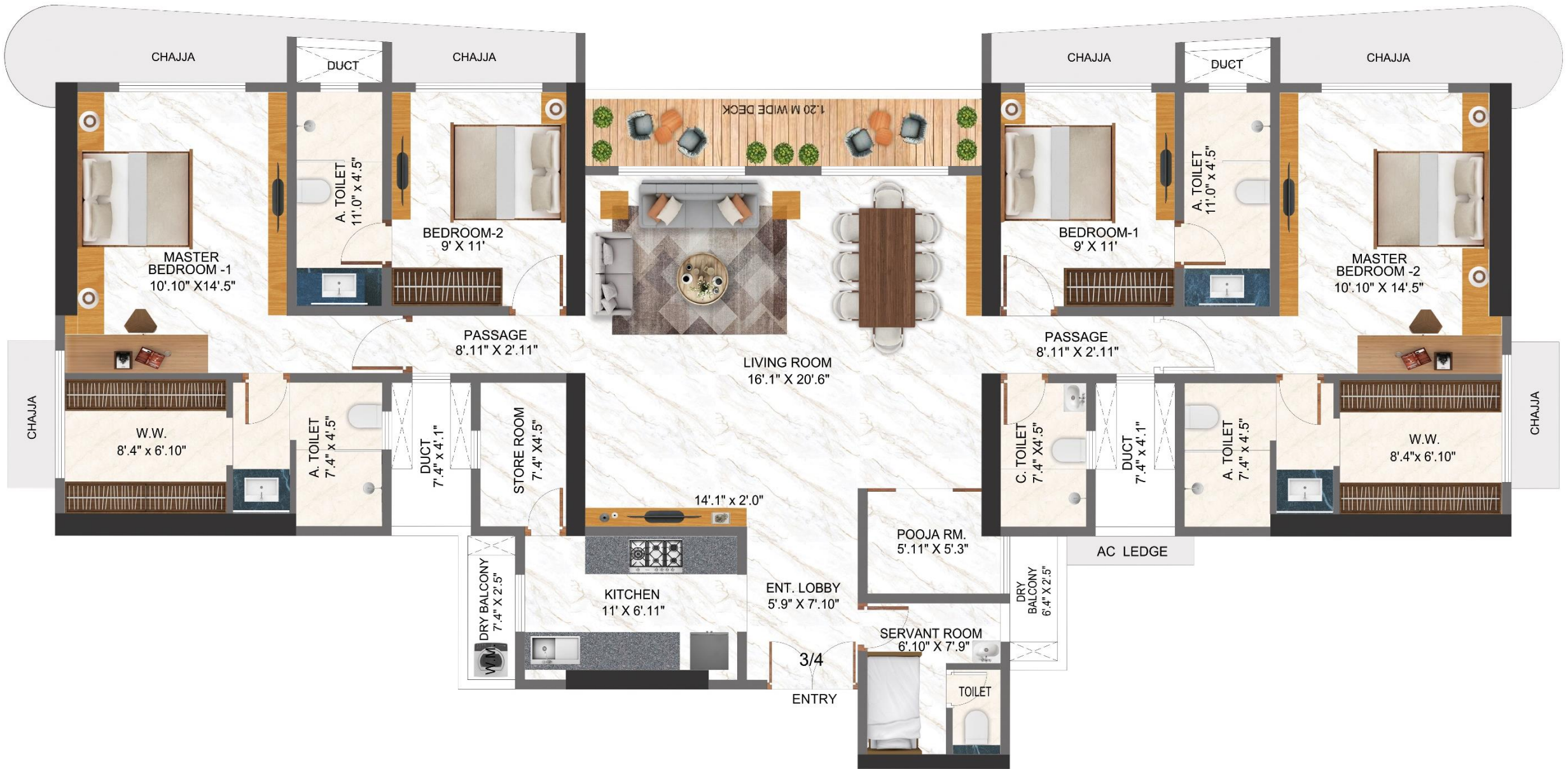


**WITHOUT DECK**  
 648 + 648 = 1296 Rera Carpet

**3 BHK + SERVANT RM. ( 2 BHK JODI )**  
**UNIT 2 & 3 ( WING C )**

**WITH DECK**  
 691 + 691 = 1382 Rera Carpet





**WITHOUT DECK**  
 853 + 846 = 1699 Rera Carpet

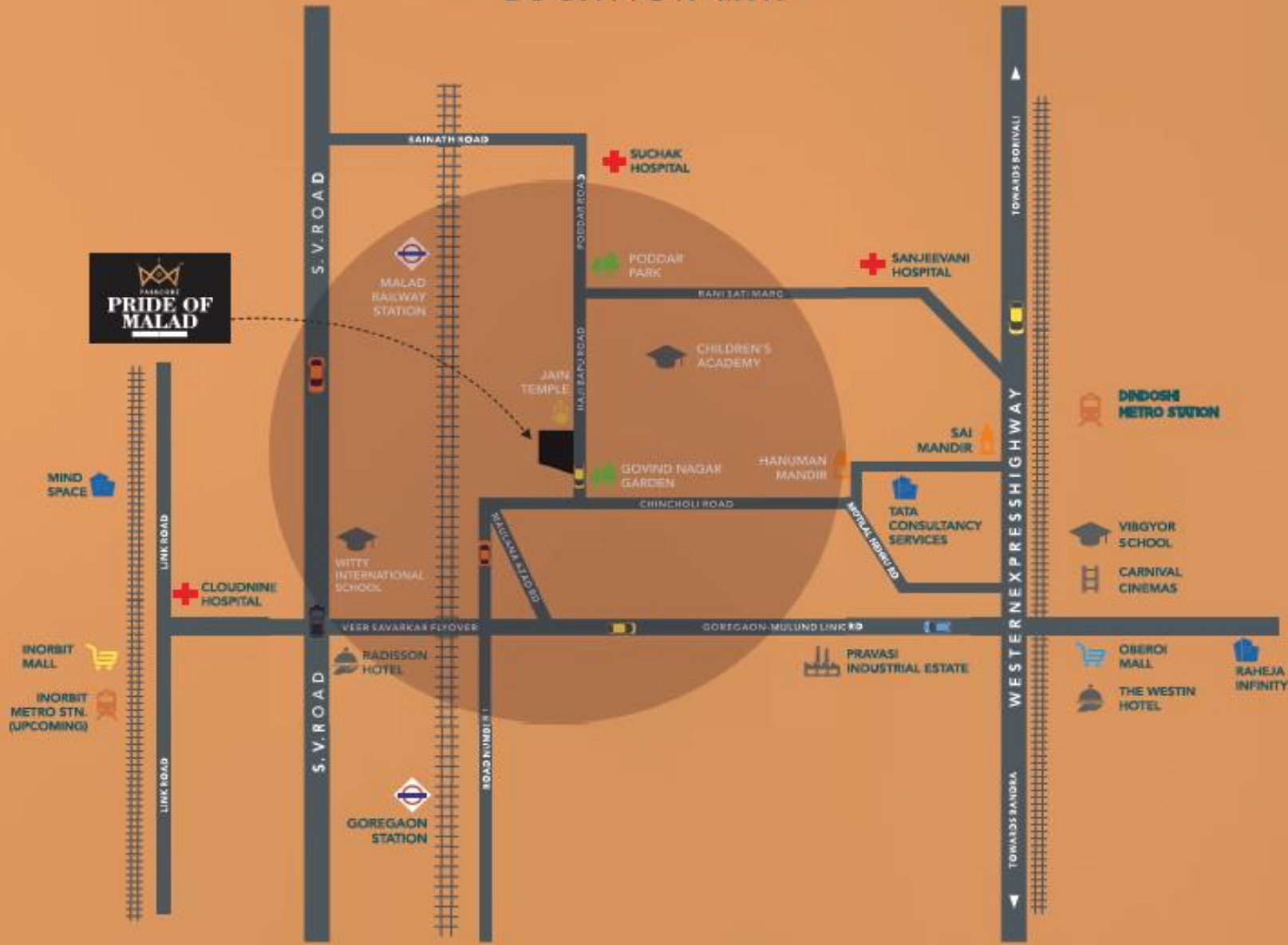
**4.5 BHK + POOJA ROOM + SERVANT RM. (3 BHK JODI)**  
**UNIT 3 & 4 ( WING F )**

**WITH DECK**  
 897 + 889 = 1786 Rera Carpet



DISCOVER  
LIFE WITH A DIFFERENCE.  
28

# LOCATION MAP



YOUR WORLD  
AROUND-

THE MOST  
PROMINENT  
LOCATION



Project By



# Right Channel



CONSTRUCTIONS PVT. LTD.

Redefining Lifestyles

**Corporate Office:** 101, Kailash Ram Kripa, Upper Govind Nagar, Kailashpuri Road, Malad (East), Mumbai - 400 097.

**Site Address:** Tower 28, Devchand Nagar, Opp Bmc School, Govind Nagar, Malad (East), Mumbai 400 097.

Email : [info@rcctower28.com](mailto:info@rcctower28.com) | Website : [www.prideofmalad.com](http://www.prideofmalad.com)

Call : 9167799997 | Visit us on :  

The project is registered as 'Tower 28' under MahaRERA Registration No. P51800028777 (Wing C & F) and is available on the website <https://maharera.mahaonline.gov.in/> under registered projects. \*T&C apply.



Maha-RERA No: P51800028777

\*T&C apply. The name 'Pride Of Malad' is used for promotional purpose only. This brochure is not a legal document and does not constitute an offer or contract of any nature whatsoever between the Promoter/Developer and the recipient. All rendered visuals, images, plans and maps are artist's conceptions meant for illustration purpose only, unless otherwise mentioned. Location map, distance are approximate and not to scale, it's only for better understanding. All colours, furniture, fittings shown are for aesthetic representation purpose only and are not part of the flat offer for sale, it only describes a conceptual plan to convey the intent and purpose of the Promoter/Developer. The details mentioned in this brochure are tentative and are subject to approval. The Promoter/Developer reserves the right to modify and vary the detail mentioned herein at its sole discretion. The promoter/Developer does not warrant or assume any legal liability for the accuracy, completeness or usefulness of any information disclosed. Government & other charges as applicable. For more details call our representative.